




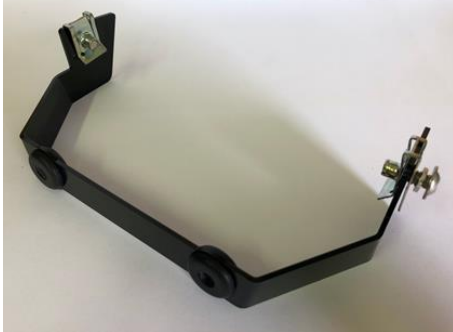
**KL**  
**SERVICE**

**KL SERVICE L3e-A2E HOMOLOGATION SPARE PARTS KX450**



PICTURE	PART NUMBER	DESCRIPTION
 A large, coiled black cable with multiple connectors, including a multi-pin connector and several smaller connectors.	KL0014REV1	MAIN HARNESS
 A short black cable with a multi-pin connector on one end and a metal sensor probe on the other.	0000-0107	BRAKE SENSOR
 A short black cable with a multi-pin connector on one end and a metal sensor probe on the other.	KX002	SPEED SENSOR

			<p>0000-7176</p>	<p>COMMANDO</p>
			<p>0362</p>	<p>FLASHER RELAY</p>
			<p>TL-GJ-017-PAIR</p>	<p>FLASHERS <b>10mm</b> ∅ (1 PAIR)</p>
			<p>TL-GJ-017-PAIR-M8</p>	<p>FLASHERS <b>8mm</b> ∅ (1 PAIR)</p>
			<p>RH RM06G10A0</p>	<p>SPEEDO</p>



**KX003**

**HEADLIGHT, FLASHER AND  
SPEEDO SUPPORT**

	<p><b>KX001</b></p>	<p><b>HEADLIGHT</b></p>
	<p><b>KX004</b></p>	<p><b>REAR PLATE HOLDER</b></p>
	<p><b>PM061-212</b></p>	<p><b>HANDGUARDS</b></p>

			<b>3.252.001</b>	<b>MIRROR (RH/LH)</b>
			<b>20C41070-001</b>	<b>CLAXON</b>
			<b>KX005</b>	<b>STEERING LOCK</b>
			<b>0181-12</b>	<b>SIDE STAND (KX450)</b>

		<b>43034-1163</b>	<b>HOLDER BRAKE MASTER CYLINDER</b>
		<b>RM.02.H03A.0</b>	<b>LED LAMP</b>
		<b>PD002-21Q</b>	<b>GREEN AND BLACK PLASTICS HEADLIGHT</b> <b>(This item does not include the spring and the bolt for the lamp height adjustment)</b>