




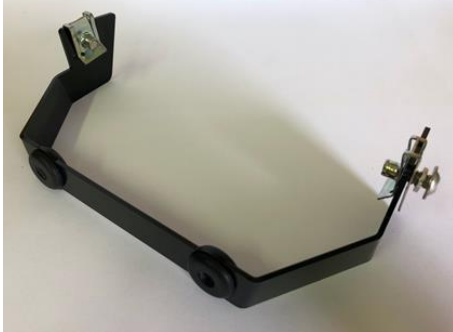


KL SERVICE L3e-A2E HOMOLOGATION SPARE PARTS KX250X



| PICTURE | PART NUMBER | DESCRIPTION |
|---|-------------|--------------|
|  A large, coiled black cable with multiple connectors, including a multi-pin connector and several smaller connectors. | KL0014REV1 | MAIN HARNESS |
|  A short black cable with a multi-pin connector on one end and a metal threaded sensor connector on the other. | 0000-0107 | BRAKE SENSOR |
|  A black cable with a multi-pin connector on one end and a metal threaded sensor connector on the other, similar to the brake sensor cable. | KX002 | SPEED SENSOR |

| | | | | |
|--|---|--|--------------------------|---------------------------------|
| |  | | <p>0000-7176</p> | <p>COMMANDO</p> |
| |  | | <p>0362</p> | <p>FLASHER RELAY</p> |
| |  | | <p>TL-GJ-017-PAIR</p> | <p>FLASHERS 10mm ø (1 PAIR)</p> |
| |  | | <p>TL-GJ-017-PAIR-M8</p> | <p>FLASHERS 8mm ø (1 PAIR)</p> |
| |  | | <p>RH RM06G10A0</p> | <p>SPEEDO</p> |



KX003

**HEADLIGHT, FLASHER AND
SPEEDO SUPPORT**

| | | | |
|--|--|-------------------------|---------------------------------|
|  | | <p>KX001</p> | <p>HEADLIGHT</p> |
|  | | <p>KX004</p> | <p>REAR PLATE HOLDER</p> |
|  | | <p>PM061-212</p> | <p>HANDGUARDS</p> |

| | | | | |
|--|--|--|---------------------|-----------------------|
| |  | | 3.252.001 | MIRROR (RH/LH) |
| |  | | 20C41070-001 | CLAXON |
| |  | | KX005 | STEERING LOCK |
| |  | | KX007 | SIDE STAND KIT |

| | | | |
|--|--|---------------------|---|
|  | | 43034-1163 | HOLDER BRAKE MASTER CYLINDER |
|  | | RM.02.H03A.0 | LED LAMP |
|  | | PD002-21Q | GREEN AND BLACK PLASTICS HEADLIGHT (This item does not include the spring and the bolt for the lamp height adjustment) |