




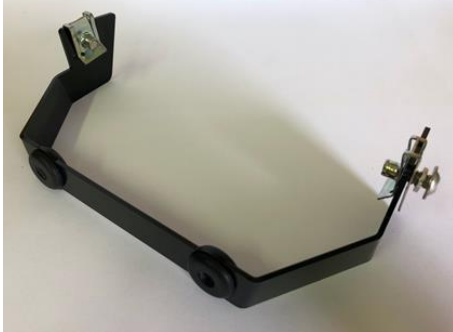


KL SERVICE L3e-A2E HOMOLOGATION SPARE PARTS KX250



PICTURE	PART NUMBER	DESCRIPTION
 A large, coiled black cable with multiple connectors, including a multi-pin connector and several smaller connectors.	KL0014REV1	MAIN HARNESS
 A short black cable with a multi-pin connector on one end and a metal threaded sensor connector on the other.	0000-0107	BRAKE SENSOR
 A black cable with a multi-pin connector on one end and a metal threaded sensor connector on the other.	KX002	SPEED SENSOR

			<p>0000-7176</p>	<p>COMMANDO</p>
			<p>0362</p>	<p>FLASHER RELAY</p>
			<p>TL-GJ-017-PAIR</p>	<p>FLASHERS 10mm ø (1 PAIR)</p>
			<p>TL-GJ-017-PAIR-M8</p>	<p>FLASHERS 8mm ø (1 PAIR)</p>
			<p>RH RM06G10A0</p>	<p>SPEEDO</p>



KX003

**HEADLIGHT, FLASHER AND
SPEEDO SUPPORT**

		<p>KX001</p>	<p>HEADLIGHT</p>
		<p>KX004</p>	<p>REAR PLATE HOLDER</p>
		<p>PM061-212</p>	<p>HANDGUARDS</p>

			3.252.001	MIRROR (RH/LH)
			20C41070-001	CLAXON
			KX005	STEERING LOCK
			0181-13	SIDE STAND BLACK (KX250)

		43034-1163	HOLDER BRAKE MASTER CYLINDER
		RM.02.H03A.0	LED LAMP
		PD002-21Q	GREEN AND BLACK PLASTICS HEADLIGHT (This item does not include the spring and the bolt for the lamp height adjustment)